



**Construction**

Horizontal multi-stage close coupled pumps in **chrome-nickel stainless steel**.

Compact and robust construction, with compact lantern bracket and motor with feet.

Single-piece barrel casing, with front suction port above pumps axis and radial delivery at top.

Filling and draining plugs on the middle of the pump, accessible from any side (like the terminal box).

**Applications**

For water supply.

For clean liquids, without abrasives, which are non-aggressive for stainless steel (with suitable seal materials, on request).

Universal pump, for civil and industrial applications, for garden use and irrigation.

**Operating conditions**

Liquid temperature from - 15 °C to + 110 °C.

Ambient temperature up to 40 °C.

Maximum permissible pressure in the pump casing: 10 bar.

**Motor**

2-pole induction motor, 50 Hz (n = 2900 rpm).

**MXH:** three-phase 230/400 V ± 10% up to 3 kW;  
400/690 V ± 10% from 3,7 to 4 kW.

**MXHM:** single-phase 230 V ± 10%, with thermal protector.  
Capacitor inside the terminal box.

Insulation class F.

Protection IP 54.

Constructed in accordance with: EN 60034-1.

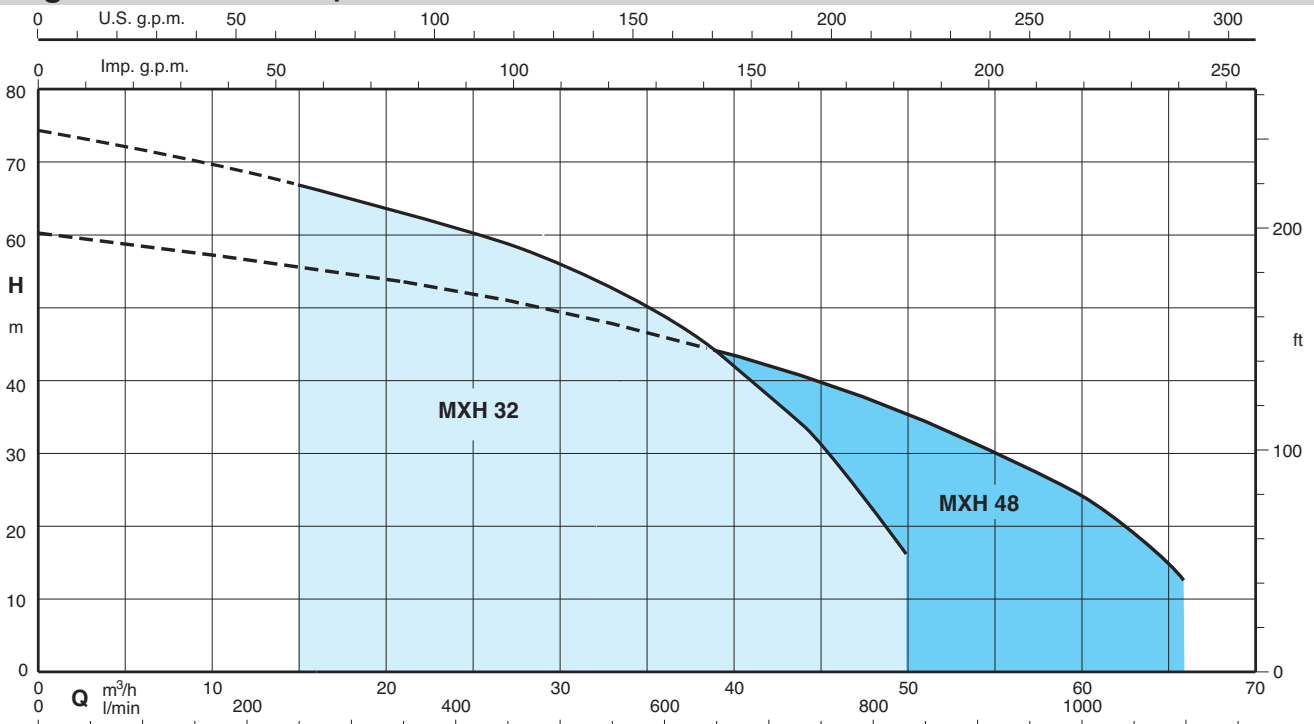
**Special features on request**

- Pump with Victaulic ports (MXH-V).
- Pump with flanged ports (MXH-F).
- Other voltages.
- Frequency 60 Hz (as per 60 Hz data sheet).
- Protection IP 55.
- Special mechanical seal
- Seal rings in FPM.
- Higher or lower ambient temperatures.

**Materials**

Component	Material
Pump casing	Chrome-nickel steel AISI 304
Stage casing	Chrome-nickel steel AISI 304
Wear ring	PTFE
Impeller	Chrome-nickel steel AISI 304
Casing cover	Chrome-nickel steel AISI 304
Spacer sleeve	Chrome-nickel steel AISI 304
Pump shaft	Chrome-nickel steel AISI 316
Plug	Chrome-nickel steel AISI 303
Mechanical seal with seat according to ISO 3069-KU	Ceramic alumina, carbon, EPDM (Other materials on request)

**Coverage chart n = 2900 rpm**



### Performance $n \approx 2900$ rpm

3 ~	230 V		400 V		P <sub>2</sub>		Q m <sup>3</sup> /h l/min	H m											
	A	A	kW	HP	0	15		21	24	27	30	33	36	39	44	50			
MXH 3201	9,15	5,3	2,2	3	18,4	16,3	15,3	14,8	14	13	12	10,8	9,3	6	-				
MXH 3202		9,6	4	5,5	37	33	31	30	28,5	27	25	23	20,5	15	7,5				
MXH 3203		12	5,5	7,5	55,5	50	47	45,5	43	40,5	38	35	31	23	10				
MXH 3204		16	7,5	10	74,5	67	63	61	59	56	53	49	44	34	16,5				

3 ~	230 V		400 V		P <sub>2</sub>		Q m <sup>3</sup> /h l/min	H m											
	A	A	kW	HP	0	21		27	33	39	45	48	51	54	60	66			
MXH 4801	11,5	6,6	3	4	20	18	17	16	14,5	12,5	11,5	10,5	9,5	7	-				
MXH 4802		12	5,5	7,5	41	35,3	33	30,5	27,5	24,5	22,5	21	19	14	7,5				
MXH 4803		16	7,5	10	60,5	53	50	46	42,5	38	35	32,5	29	22,5	16				

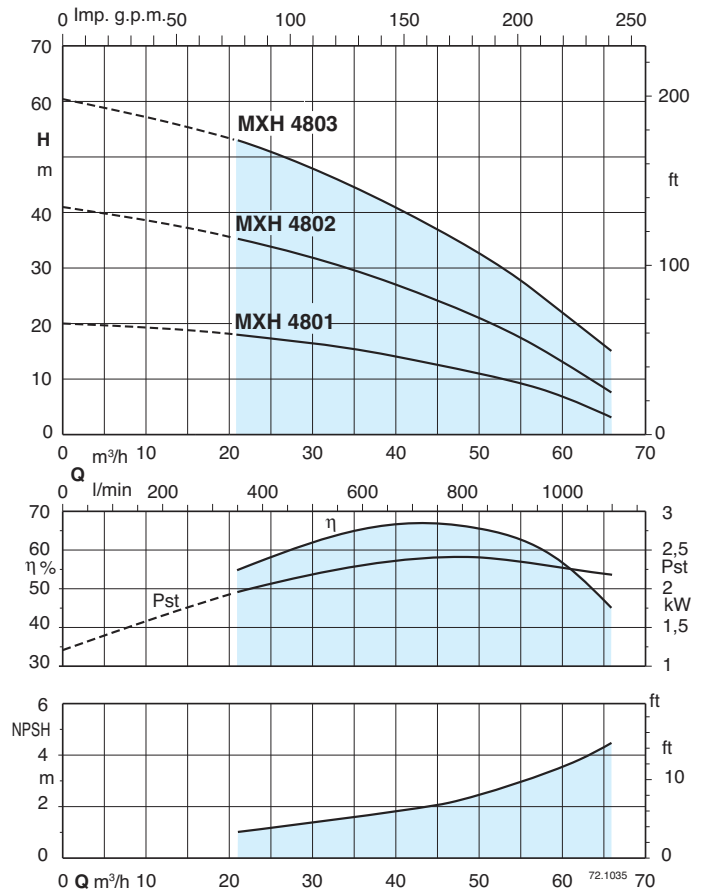
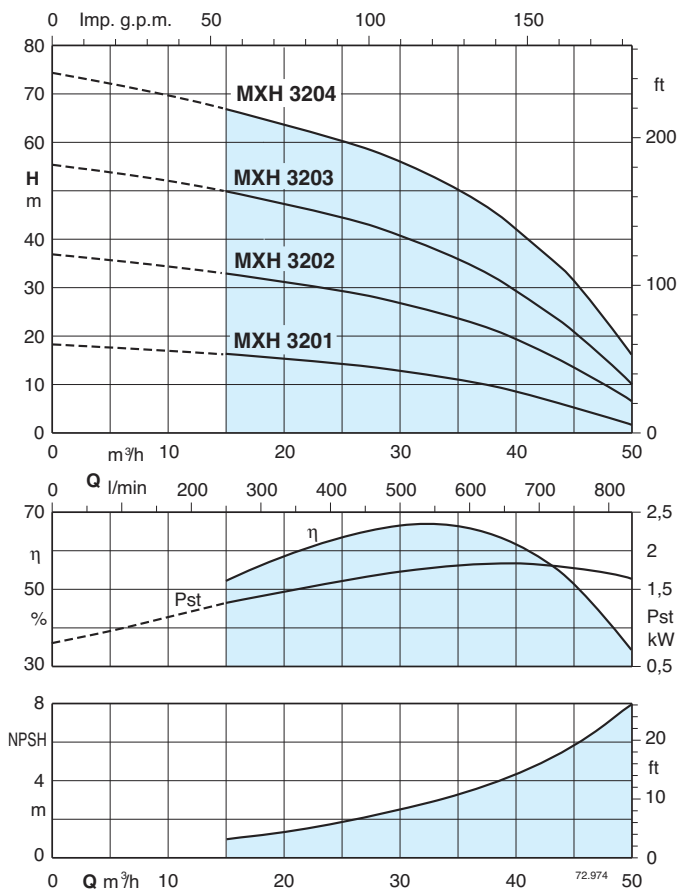
P<sub>2</sub> Rated motor power output.

Test results with clean cold water, without gas content.

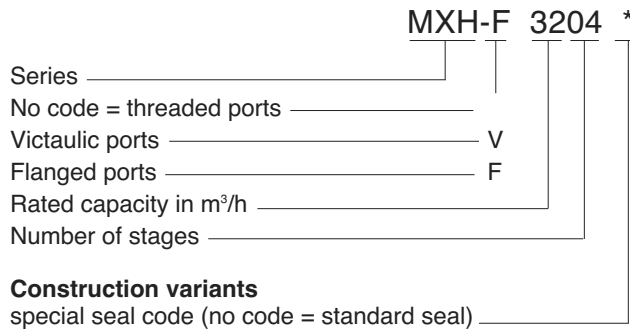
IA/IN = D.O.L. starting current / Rated current

Tolerances according to ISO 9906, annex A.

### Characteristic curves $n = 2900$ rpm

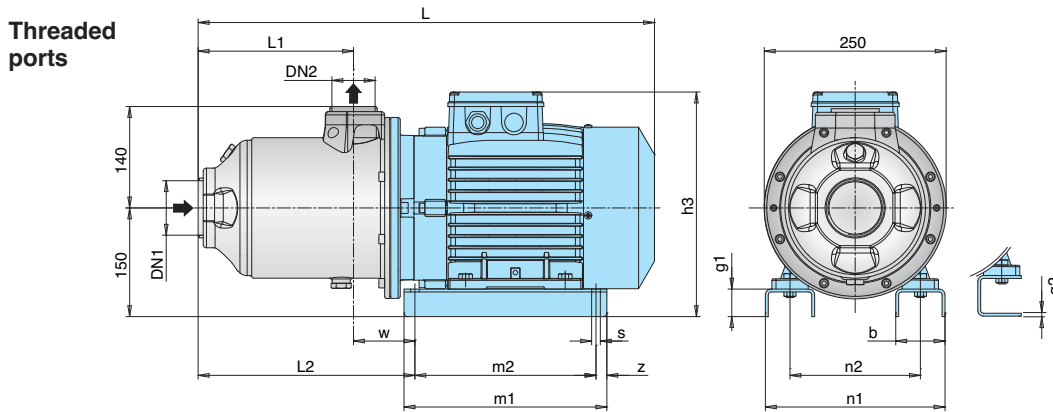


### Designation



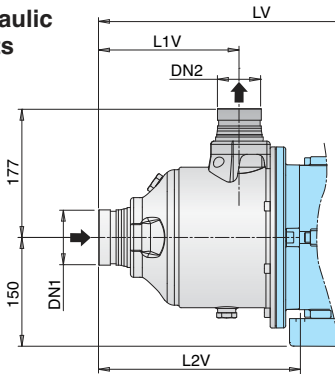
6.2

### Dimensions and weights



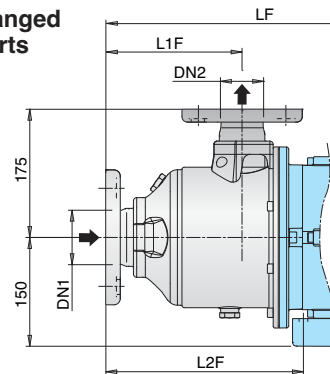
TYPE	DN1 ISO 228	DN2 ISO 228	mm														kg
			L	L1	L2	h3	m1	m2	n1	n2	z	b	s	w	g1	g2	
<b>MXH 3201</b>	G 2 1/2	G 2	461	120,5	216	280	205	175	170	130	15	54	10	92,5	-	6	26,5
<b>MXH 3202</b>	G 2 1/2	G 2	515	120,5	233	280	205	175	180	140	15	54	10	112	-	6	38
<b>MXH 3203</b>	G 2 1/2	G 2	582	166,5	251	310	280	250	258	190	15	68	12	84	38	-	49
<b>MXH 3204</b>	G 2 1/2	G 2	628	212,5	297	310	280	250	258	190	15	68	12	84	38	-	57
<b>MXH 4801</b>	G 3	G 2 1/2	545	136	263	280	205	175	180	140	15	54	10	128,5	-	6	35
<b>MXH 4802</b>	G 3	G 2 1/2	566	136	235	310	280	250	258	190	15	68	12	100	38	-	48,5
<b>MXH 4803</b>	G 3	G 2 1/2	628	197,5	297	310	280	250	258	190	15	68	12	100	38	-	57,5

#### Victaulic ports

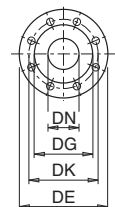


TYPE	DN1 mm	DN2 mm	mm		
			LV	L1V	L2V
<b>MXH-V 3201</b>	76,1 (DN65)	60,3 (DN50)	501	160	256
<b>MXH-V 3202</b>	76,1 (DN65)	60,3 (DN50)	555	160	273
<b>MXH-V 3203</b>	76,1 (DN65)	60,3 (DN50)	622	206	291
<b>MXH-V 3204</b>	76,1 (DN65)	60,3 (DN50)	668	252	337
<b>MXH-V 4801</b>	88,9 (DN80)	76,1 (DN65)	585	175	303
<b>MXH-V 4802</b>	88,9 (DN80)	76,1 (DN65)	606	175	275
<b>MXH-V 4803</b>	88,9 (DN80)	76,1 (DN65)	668	237	337

#### Flanged ports



TYPE	DN1 mm	DN2 mm	mm		
			LF	L1F	L2F
<b>MXH-F 3201</b>	65	50	491	151	246
<b>MXH-F 3202</b>	65	50	545	151	263
<b>MXH-F 3203</b>	65	50	612	197	281
<b>MXH-F 3204</b>	65	50	658	243	327
<b>MXH-F 4801</b>	80	65	565	156	283
<b>MXH-F 4802</b>	80	65	586	156	255
<b>MXH-F 4803</b>	80	65	648	218	317

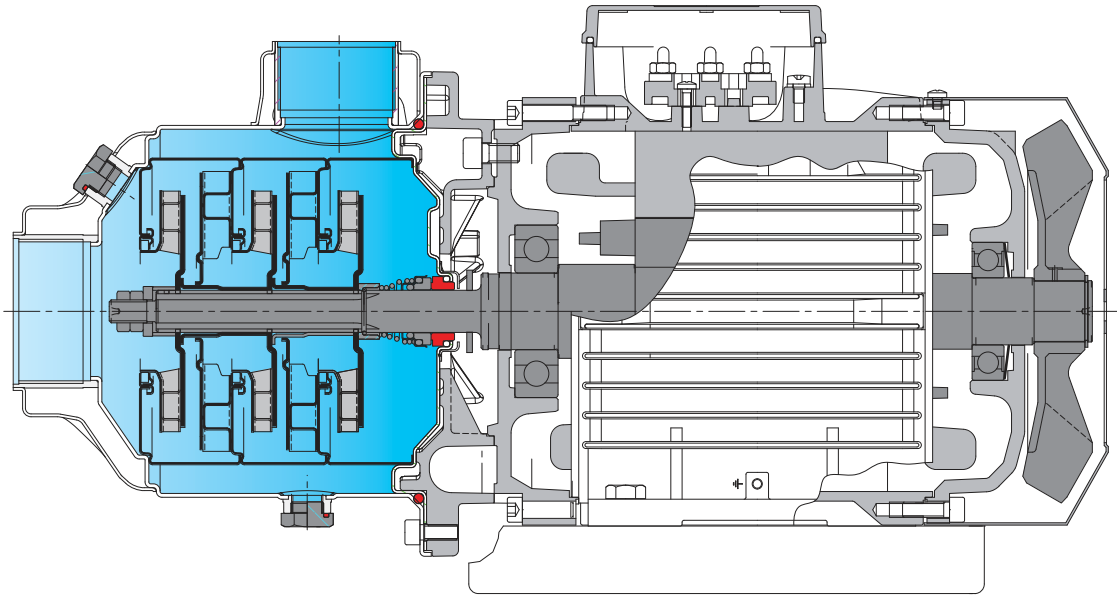


Flanges\* EN 1092-2

DN	DE	DK	DG	Fori	
				N.	Ø
50	165	125	99	4	19
65	185	145	118	8	19
80	200	160	132	8	19

\* ASME 150 lb (ex ANSI 150 lb)

### Features



#### **Flexibility**

Three versions of ports: threaded, flanged and Victaulic.

#### **Extra safety**

With front axis suction port for optimum suction conditions.

#### **Reliable**

All hydraulic parts in contact with the pumped liquid are made in stainless steel.  
For liquids from -15 °C to 110 °C.

#### **Robust**

Single-piece, thick barrel casing, open on one side only, with reinforced threaded ports.

#### **Compact**

The bracket between pump and motor is extremely compact.

#### **Greater protection**

Against leakage, with the pump casing cover separated from the motor shield.  
Possibility of inspecting the seal through the side apertures between the two walls.